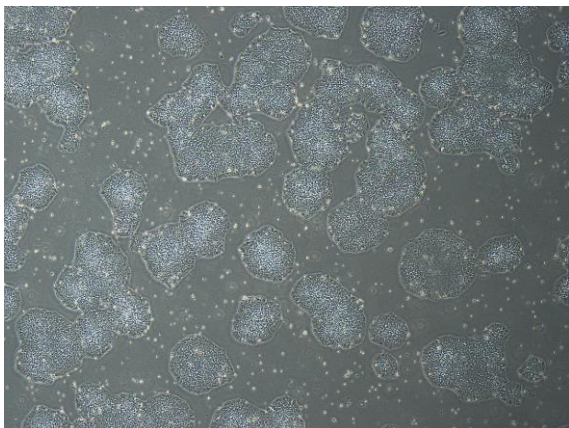
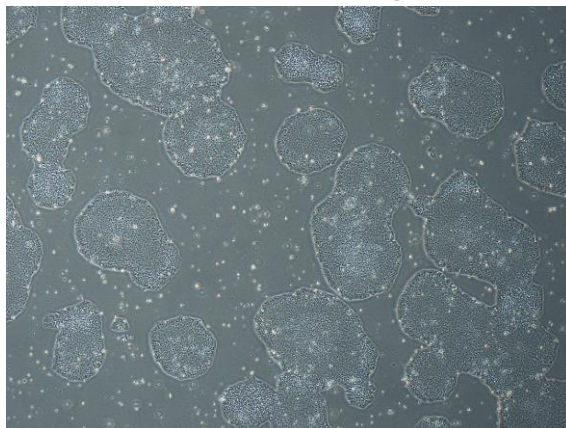


【 CiRA-j-1615 】 Morphology of iPSC colonies

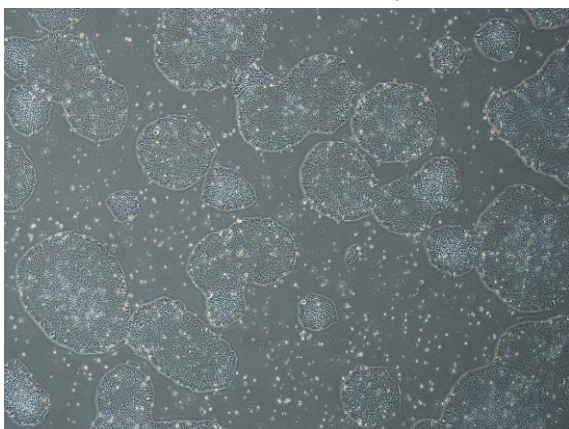
CiRA-j-1615-A: passage-3



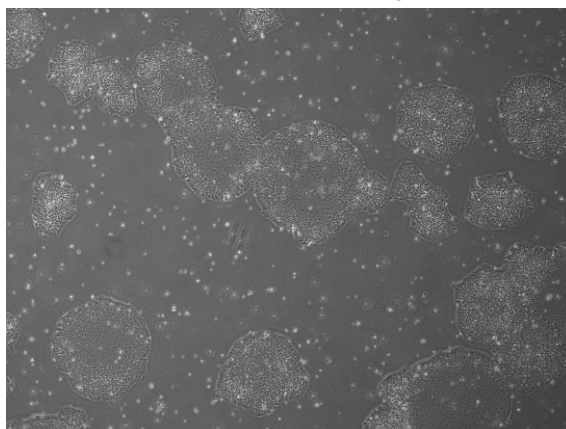
CiRA-j-1615-B: passage-3



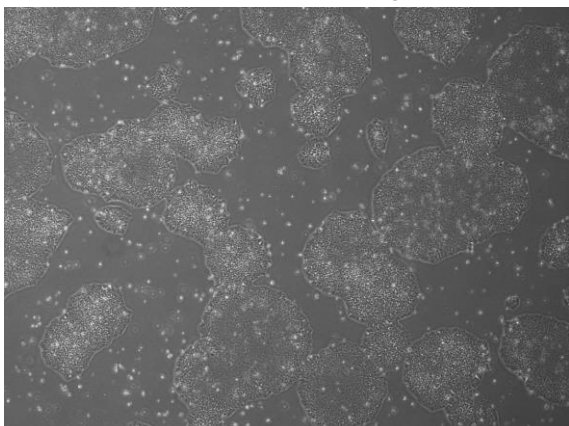
CiRA-j-1615-C: passage-3



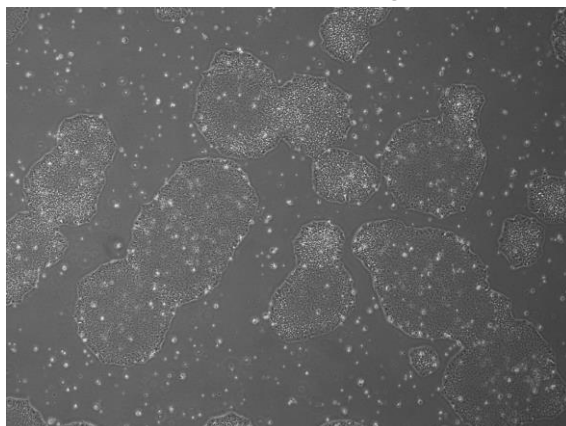
CiRA-j-1615-D: passage-3



CiRA-j-1615-E: passage-3



CiRA-j-1615-F: passage-3



(All images were captured at 4x magnification)